

Primary Post

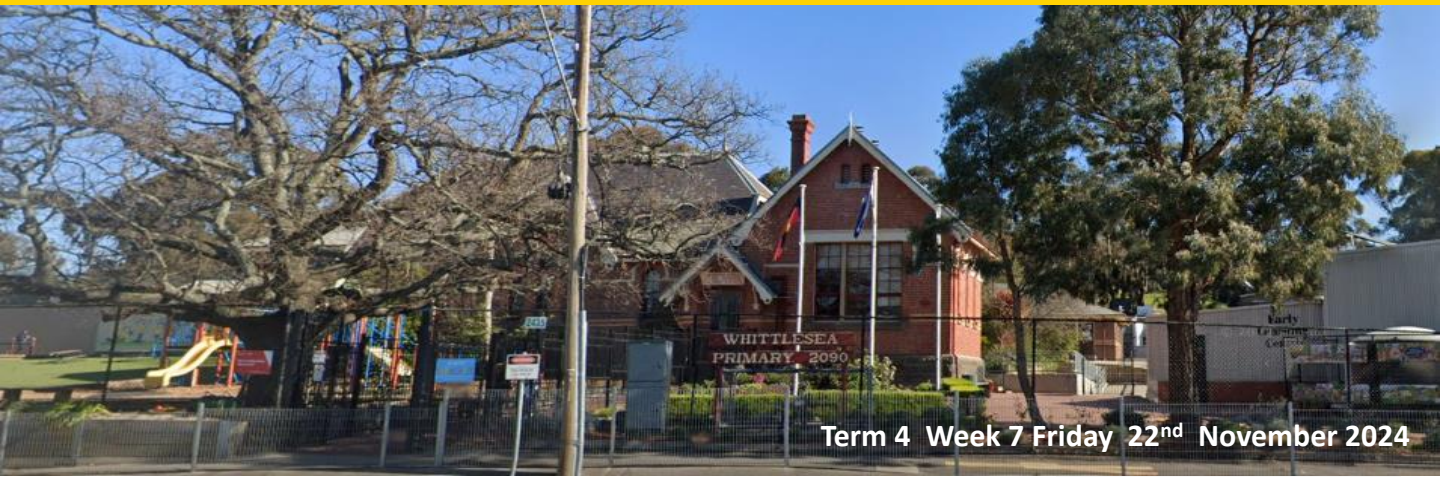
Whittlesea Primary School

Telephone: 9716 2140

Fax: 9716 2516

Email: whittlesea.ps@edumail.vic.gov.au

*Respect Your School
Do Your Best
Help Others Succeed*



Term 4 Week 7 Friday 22nd November 2024

Upcoming Events :

- Monday 25th November- Breakfast Club- 8am
- Monday 25th November- 3-6 Swimming continues
- Friday 29th November- Foundation-2 Swimming commences



Key Dates



Principal's Report

Another week has passed, and the weeks seem to pass faster and faster. We have been working towards the end-of-year processes whilst also setting up for 2025. Yesterday, via Compass, I posted information about the Parent Payments (contributions). As stated in the post, with the support of our School Council, we have implemented an 'all-inclusive' model. We feel this will benefit our families regarding time and personal finances. As this is a different approach from what has occurred recently, we have included a Frequently Asked Questions Guide to support your understanding. It is important to note that no payments are due at this time. The Compass Payment Centre will open on Monday, 9th December 2024, and remain open over the holidays and throughout 2025. The 2025 Parent Payment (Contributions) can be paid in full or as part-payment options. Before this opening date, a Compass Payment Centre Guide will be shared with families. If you have any questions regarding this, please do not hesitate to contact the office.

On Tuesday, the Principal team of Ms Gittos, Mr Kirkright, and I attended the City of Whittlesea School's Network planning day. This was when all the Principals from the network were invited to complete their 2024 end-of-year monitoring and commence their 2025 Annual Implementation Plan (AIP) planning. This was an excellent opportunity to connect with other Principals. Still, more importantly, it allowed us to use the expertise in the room to support us in our strategic planning and complete the required documentation.

Our Whittlesea Primary School AIP is almost complete and will be shared with the School Council at our last meeting in December. Our planning was a little different this time, as in term 2 of 2025, we are having our school Review. School Reviews are a mandatory requirement that all schools must do every 4 years. It will allow us to complete a 'deep dive' into all matters at the school, from learning to logistics. More information will be shared at the start of 2025 when the school must complete a Minimum Standards audit and a Pre- Review Self Evaluation (PRSE). The PRSE will include feedback from all key stakeholders: families, students and the staff.

Regarding our 2025 AIP, our key priority areas will continue to focus on maximising learning growth for all students and strengthening their health and wellbeing. These goals are our key improvement strategies, including building teacher capability in best practice teaching and learning, building the consistent application of the school's instructional models, strengthening the health and wellbeing of students, and building staff capability to teach social and emotional skills.

In addition to these, we will be working on developing more authentic Professional Learning Communities or PLCs. PLCs involve more than just teachers working in a team; PLCs are teams of teachers within a school who work collaboratively to collectively improve student learning and wellbeing. PLCs work on the school improvement priorities outlined in their school's School Strategic Plan (SSP) or Annual Implementation Plan (AIP). They use the Framework for Improving Student Outcomes Improvement (FISO) cycle to work through focussed inquiry cycles with defined 'phases' that always use student data, current evidence, educational research and continuous feedback. I look forward to seeing these inquiry cycles in action next year.



On Wednesday evening, we had our 2025 Foundation information evening with both families that are new to the Whittlesea Primary School Community but with many familiar faces who already have older children at the school. Whilst these children will 'officially' commence in 2025, they have been participating in our Pre-Foundation sessions that enable them to feel comfortable at school and support them in a positive transition experience. The 2025 Foundation sessions differ slightly from the Year 1 – 6 students. These have been communicated to 2025 Foundation families via the presentation and also via email. If you do have a child starting Foundation next year, please use the Compass login details provided to ensure you are not missing out on any notifications.

Lastly, as the hotter weather arrives, I remind all students to bring their School Hats to wear while outside and their water bottles to keep hydrated throughout the day. When our water bottles are empty, students know that they can go to either of our new drink taps (hydration stations) to fill them up with very 'fresh' filtered water.

Enjoy your weekend,
Kaylene Kubeil
Principal

Assistant Principal's Report



It has been a busy few weeks for our teachers and students as they complete several assessments. Our teams have been busy planning routines for the Christmas Concert, and our Year 6 students have been rehearsing their graduation dances under the careful watch of Ms Cummins and Miss N.

While the year is far from over, our leaders have been busy revising our start-up program that will run for the first 7 days (2 weeks) of the school year. We are constantly striving to improve, and our leaders have identified areas where our start-up program can be made more engaging. Start-up is a very important part of the school year, and it helps set classroom expectations and norms for the year while establishing student-teacher relationships, which are vital to a successful year.

Phonics Mandate

The Victorian Government has mandated that all Foundation students complete at least 25 minutes of phonics instruction each day. This needs to extend to all F-2 students within the next 3 years.

Whittlesea Primary School is pleased to announce that we will implement this phonics mandate ahead of the planned schedule. All our F-2 students will commence the Little Learners Love Literacy (LLLL) program in 2025. LLLL is a systematic, synthetic phonics program that is structured, cumulative, and, most importantly, evidence based.

Our F-2 teachers have completed a series of pre-assessments to determine the starting point for our Year 1-2 students next year. The Tutor Learning Initiative has also been extended for 2025. Our tutors will run small focus groups utilising the same LLLL program to help students fill pre-identified gaps in their knowledge. By the end of February 2025, all of our teachers across year levels F-2 will have been trained in the LLLL program.

Year 3 to 6 students will also commence a revised English 2.0 curriculum next year, with an increased focus on phonics and word knowledge. Ms Cummins has been leading the work around how this will look and fit within the WPS instructional model and lessons.

Year 6 City Experience Excursion (see next page for photos)

Today, the Year 6 cohort went on an excursion to the city to tour the MCG and participate in a reenactment of Ned Kelly's trial from 1880 at the Old Melbourne Gaol.

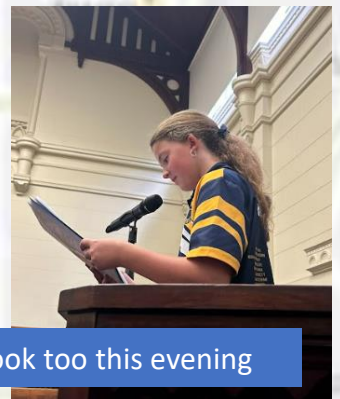
Students were given various roles to act out during Ned Kelly's trial, ranging from the judge to the lawyers to police officers, witnesses, and even Ned himself.

The MCG tour took students around the MCG, from the club change rooms to recovery rooms to the MCC. Students got to go through the Long Room and see the commentary boxes, corporate suites, and Media Centre. We learnt how the cricket pitches are inserted and removed from the ground. We sat behind the press conference desk, where the coaches give their press conferences after games.

Today was just one of many events for the Year 6 students in the lead-up to the end of the year, with activities such as graduation and Funfields still to come.

Matt Kirkright & Rae Gittos
Assistant Principal Team

Year 6 City Experience



Check out WPS Facebook too this evening

Stars of the Week

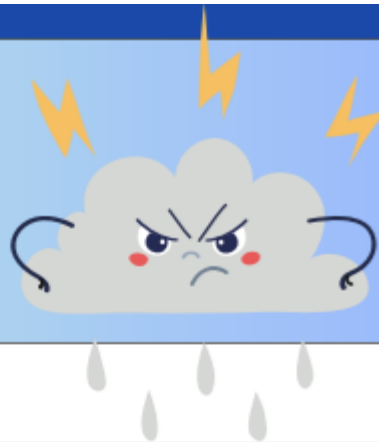
Lola Winata-Knipe	Foundation D	For creating a yes or no question and then surveying her class to collect data.	Mikayla Di Mauro
Rei Stahl	Foundation G	For reading so fluently and answering question about the text. Well done Rei!	Jess Gordon
Georgie Sandford	Foundation G	For being a kind classroom helper that always looks out for her peers. Great work Georgie!	Jess Gordon
Jordyn Scott	Foundation F	For doing a great job writing lists and ensuring they include headings and are clearly organised. Great job Jordyn!	Jess Fontana
Kai Webber	Foundation F	For his excellent skills interpreting different graphs this week in Math. Well done Kai!	Jess Fontana
Charlotte Studwick	Year 1/2F	For demonstrating outstanding growth in reading. Well done Charlotte!	Carli Scoberg & Amanda Pascoe
Freddy Duncan	Year 1/2S	For displaying his amazing reading skills in his assessments and making a great achievement. Well done Freddy!	Stuart Maxfield
Chelsea Hobbs	Year 1/2M	For showing persistence when ordering 3 digit numbers from smallest to largest. Well done!	Madison Merritt
Hudson Mellford	Year 1/2M	For writing a creative procedure on how to catch a monster. Great work Hudson!	Madison Merritt
Bella Beardsworth	Year 1/2B	For your amazing efforts in practising our Christmas Carol and displaying an eagerness to learn. Well done Bella!	Jai Bowring
Rhyder Elkhodr	Year 1/2B	For being able to use a number line to solve many addition and subtraction problems. Well done Rhyder!	Jai Bowring
Cassidy Engdahl	Year 1/2K	For your amazing efforts in reading. Well done Cass!	Kate Storck & Sarah Pearce

Dylan Studwick	Year 3/4B	For being a supportive class member and encouraging your peers to overcome challenges especially at swimming. Well done Dylan!	Naomi Liersch
Charlie Stewart	Year 3/4D	For the hard work you have put into your letter writing for your 2025 buddy. Keep it up, Charlie!	Nicole Newland & Brad Dupuy
Angus Watt	Year 3/4Z	For persisting when solving time based problems during our maths lessons. Well done Angus!	Zoe Dyer & Jacquie Mondon
Duke Wright	Year 3/4T	For a wonderful effort during daily handwriting tasks. Keep it up, Duke!	Val Gordon
Lexi Duncan	Year 3/4C	For writing a creative and heartfelt letter to her buddy for next year. Lilah is lucky to have you!	Elise Cowdery
Levi Linton	Year 5B	For working hard to complete your writing pieces and publishing your picture storybook. Great work Levi!	Matthew Symeoy
Angelissa Perinovic	Year 5C	For demonstrating your braveness in presenting your inquiry project. Your team members are lucky to have you! Keep it up!	Jacky Chen
Paige Frappa	Year 5M	For your amazing narrative writing this week! Your creativity, use of language features, and strong structure made your story engaging from start to finish. Keep up the fantastic work Paige!	Joshua Watts
Annie Watson	Year 6A	For advocating for yourself and setting yourself up for success at swimming! Very proud of your efforts Annie!	Matt Kirkright & Emma Naval-Thomas
Khloe Hay	Year 6C	For making a fantastic Inquiry presentation that was both informative and entertaining. Well done, Khloe	Hope Cummins
Kruz Edwards	Year 6P	For being organised and aware of time management to complete his learning to the best of his ability.	Rob Pain & Leonie Gorski
6A	PE	For their fantastic team work during our rounders round robin! Great work 6A!	Hayley Northridge
1/2 K	PE Boost	For working well together as a team, swapping roles to tag the other team in softball tag.	Verena Smith
1/2 B	Junior Art	For being superstars and helping each other succeed during the paper weaving lesson. Congratulations and keep it up!	Liz Stojanov
6A	STEM	For fantastic work on your applications. You make me so proud!	Hugh Wilson
OD	Mandarin	For actively participating in class, answering questions during Chinese learning, and working quietly. Superstar!	Jessie Liu



WELL DONE!

AFTER SCHOOL RESTRAINT COLLAPSE A PARENT'S GUIDE



Wellbeing @ Whittlesea

WHAT IS AFTER SCHOOL RESTRAINT COLLAPSE?

After-School Restraint Collapse (ASRC) refers to the emotional breakdown children sometimes experience after a long day of school. Throughout the day, children hold back their emotions, focusing on behaving appropriately and following rules.

Once they get home, the "restraint" is released, and they may have a meltdown or act out in frustration. This can happen even if the child had a good day at school.

SIGNS TO LOOK OUT FOR:

- Tantrums or excessive crying
- Increased irritability or anger
- Extreme fatigue or refusal to participate in activities
- Sudden emotional outbursts

TIPS TO PREVENT ASRC

Create a Calm Routine

After school, offer a calming activity: a snack, quiet time, or reading.

Look for Early Warning Signs

Recognize when your child might be overwhelmed, like zoning out or avoiding conversation.

Offer Sensory Breaks

Give time for your child to reset, whether through a favorite toy or calming activity.

Encourage Physical Activity

Physical exercise like walking or jumping can help release tension.

Laugh Together

Laughter releases the same tension as crying!

Talk About the Day

Provide a safe space for your child to express how their day went.

Limit After-School Activities

Avoid over-scheduling to give your child downtime after school.

Feed Your Child a Healthy Snack

Offer a balanced snack with protein, fiber, and healthy fats. Hunger can lead to irritability and fatigue, making emotional regulation harder.

WHY DOES ASRC HAPPEN?

Children hold back emotions throughout the day at school to follow rules and behave. Once they return home, they may release that built-up stress through a meltdown.

STUDENT VOICE



Student Voice Schedule Term 4



Whittlesea Primary School

Week	Date, Time & Location
8	Wednesday 27th November, Session 5, Sensory Space
10	Wednesday 11th December, Session 5, Sensory Space



The Community Leader was such a great experience. You get to take on the leadership role of collecting golden tickets, helping our classes and tidying up the school. It is a fantastic way to show our three school expectations: Do Your Best, Help Others Succeed, and Respect Your School. Don't tell the teachers, but the best part is coming out of uniform and helping in PE overall is a great extra activity that the Year 3-6 to contribute to our school

- Charlotte (Yr.5)

Community Leaders 2024

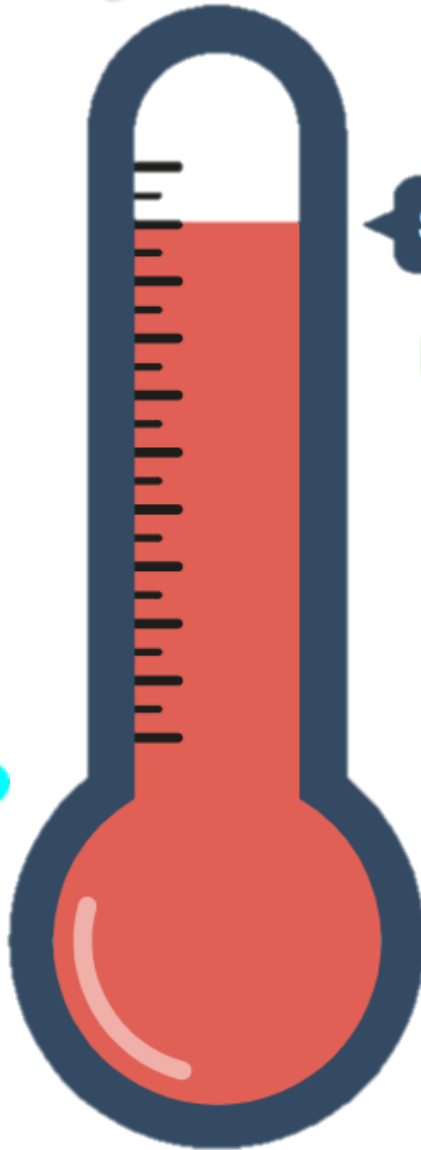
Community Leaders are continuing for Term 3 & 4 2024. 😊

Remember students who will be participating, on their assigned day will not have to wear uniform and can come in casual clothes.

Hunter MCKAY	25th November
Angelissa PERINOVIC	25th November
Ivy MILLAR	26th November
Kaleb CLARK	26th November
Lewis BORDIGNON	27th November
Alex KOLOTELO	27th November
Necati KUBSH ALTUNDAS	28th November
Nevaeh REDPATH	28th November
Eva RILEY	29th November
Audrey CUSINATO	29th November



Colour Fun Run Money Raised



AMAZING!

Friendly Reminders



2025 Years 1- 6 Class Creation Family requests need to be finalised by next Monday, November 25th. This deadline is very important as we need to ensure that we are ready for the two orientation sessions, which are...

Session 1: Tues 3rd Dec 9.00am - 11.00am

Session 2: Tues 10th Dec 9.00am - 12.45pm

A message about...

BICYCLE SAFETY

Safety is our top priority when you're riding your bike to and from school. Here are some important tips to help you stay safe:

- **Wear a Helmet:** Always wear a properly fitted helmet. It protects your head in case of a fall or accident.
- **Follow Rules:** Obey all traffic signals, signs, and rules. Ride in the same direction as traffic and always stop at red lights and stop signs.
- **Use Hand Signals:** Signals when turning or changing directions so drivers and other cyclists know your intentions.
- **Stay Visible:** Consider using bike lights and reflectors for added visibility.
- **Watch for Pedestrians:** Always be cautious around pedestrians' other students or family members, especially at entry and exit. Slow down and give them plenty of space.
- **Be Alert:** Keep your eyes on the road and stay focused. Avoid distractions like headphones or phones while riding.
- **Ride at a Safe Speed:** Don't rush. Ride at a speed safe for the conditions, and be extra careful around intersections, driveways, and busy streets.

These simple steps can help ensure a safe and enjoyable ride to and from school.

**** AT NO TIME SHOULD YOU RIDE YOUR BIKE OR SCOOTER IN THE SCHOOL GROUNDS ****

Stay alert, stay safe, and have fun biking!



In the spirit of reconciliation, TheirCare acknowledges the Traditional Custodians of country in Australia and their connections to land, sea and community. We pay our respects to their Elders past, present and emerging and extend that respect to all Aboriginal and Torres Strait Islander peoples today.

Weekly Menu:

Breakfast

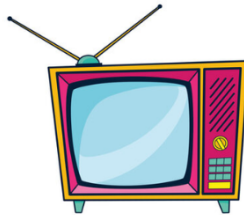
Cereal (Cheerio's, Rice Bubbles and Corn Flakes)
Toast (Butter, Vegemite and Strawberry Jam)

Afternoon

Monday- Banana Bread and fresh fruit
Tuesday- Custard and fresh fruit
Wednesday- Ham, cheese salad wraps and fresh fruit
Thursday- Rice crackers with dips and fresh fruit
Friday- Party Pies and Sausage Rolls with fresh fruit

Theme: Movie Week

This week at Theircare, our students had a fantastic time during Movie Week! The children embraced the theme with enthusiasm, getting creative in arts and crafts as they designed their own unique characters. They also had a great time discussing their favourite movies and sharing their top picks. The fun continued with engaging group games, including silent ball, Chinese whispers, Uno competitions, and drawing challenges, ensuring a week full of laughter, teamwork, and creativity!



Big News and Upcoming Events:

- Bookings open for Summer Holiday Program





Doreen
Scout Group

Order online and
limited roadside sales:

- Trees from \$90 and Cinco Stands from \$50
- Pick up and deliveries from 1 December

FRESH CUT Christmas Trees

Support the Doreen Scout Group by
purchasing your Christmas tree!

Trees

- 5ft \$90
- 6ft \$100
- 7ft \$110
- 8ft \$150

Cinco Stands

- Small \$50
- Medium \$70

Pickup and delivery

Sunday, December 1

FREE pick up from Doreen Scout Hall or **delivery for \$30**

Saturday, December 7 & 14

Roadside sales and FREE pick up from Bunnings Mernda carpark or **delivery for \$20**

Sunday, December 8 & 15

Roadside sales from Bunnings Mernda carpark until sold out

Delivery outside catchment (still local) available for \$50 up to December 14 or until sold out



doreenscouts.com/christmas-trees

FUN
funfields
THEMEPARK

Little kids

LOVE FUN



TIX ONLY \$15

Are your little ones ready for some FUN? Come in & enjoy our **Kinder Kids Sessions** at **Funfields Theme Park**. Tailored 3hr Mystic Kingdom sessions at family friendly prices.

DATES: Friday 22nd NOV 9:30am - 12:30 pm
Monday 25th NOV 9:30am - 12:30 pm

TO DO: MYSTIC KINGDOM Dry Rides
Story Time Sessions
Coffee & Cakes Options @ Cafe



*Children 80cms+ require a ticket.
FREE Adult entry provided with every
paying child.
Children below 80cms FREE.*

Scan QR code for details



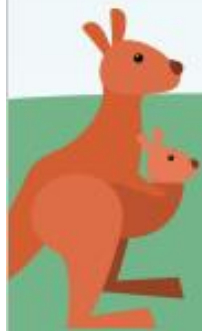


City of
Whittlesea

Enviro Fest 2024

30 November
12pm – 4pm

Painted Hills community centre and
surrounds, Eminence Boulevard, Doreen



Join us for a day of family fun:

- Circular Fashion Market
- Eco Explorers
- Dirt jumps
- Food & coffee
- Live animal displays
- Plus more!



For more information visit whittlesea.vic.gov.au/events

FREE
COMMUNITY
EVENT

EVENTS
Whittlesea

The Whittlesea

Christmas Festival 2024



Sat. 14th Dec. 4pm-9pm

@ the Whittlesea Agricultural Society - Parking at Showgrounds

Proudly supported by



City of
Whittlesea



MORE FOOD with Family Friendly Options

MORE CLASSIC CARS

MORE MUSIC

MORE MARKET STALLS



MARKET STALLS
LIVE MUSIC &
FOOD from 4pm

DO YOU SEE
WHAT I SEE?

FREE ENTRY
ANIMAL FARM
BRING THE
FAMILY



KIDS CRAFT ACTIVITIES

**CHRISTMAS TREE
EXTRAVAGANZA**

SANTA & THE GRINCH

Community Carols from 7pm

Family Friendly - Non-Alcohol Event - BYO picnic/chairs

Brought to you by

Horizons
church

on behalf of the
WHITTLESEA COMBINED CHURCHES

The Whittlesea Agricultural Society

presents the

WHITTLESEA COMMUNITY

Christmas Tree Extravaganza
2024

DECEMBER 8TH - 21ST. OPEN DAILY 1PM - 8PM. GOLD COIN ENTRY

ADMINISTRATION BUILDING, GATE 1 MCPHEES RD, WHITTLESEA

Come and explore our enchanting Christmas wonderland
where you will find great photo opportunities, visits from
Santa & you'll get to vote for your favourite tree!





Whittlesea Fire Brigade
100% volunteer since 1926

**Whittlesea Fire Brigade
proudly presents**

**Great Bowls of Fire
Fundraiser 2024**

FRIDAY 6th of December
8.30am – 4.00pm at the Whittlesea Bowling Club

Join us for a fun day on the green!
Prizes | Silent Auction | Raffles

Platinum Event Partner:



For ticketing or more information on how you can support this event,
including terms and conditions, please visit our website,
cfawhittlesea.com/fundraisingevents

